

ISLA VERDE OF WELLINGTON RESIDENTIAL REPLAT NO. 1

BEING A REPLAT OF ISLA VERDE OF WELLINGTON RESIDENTIAL REPLAT, ACCORDING TO THE PLAT THEREOF, AS CARRIED IN PLAT BOOK 115, PAGES 69 THROUGH 73, PUBLIC RECORDS OF PALM BEACH COUNTY, FLORIDA, LYING IN SECTIONS 6 AND 7, TOWNSHIP 44 SOUTH, RANGE 42 EAST, VILLAGE OF WELLINGTON, PALM BEACH COUNTY, FLORIDA

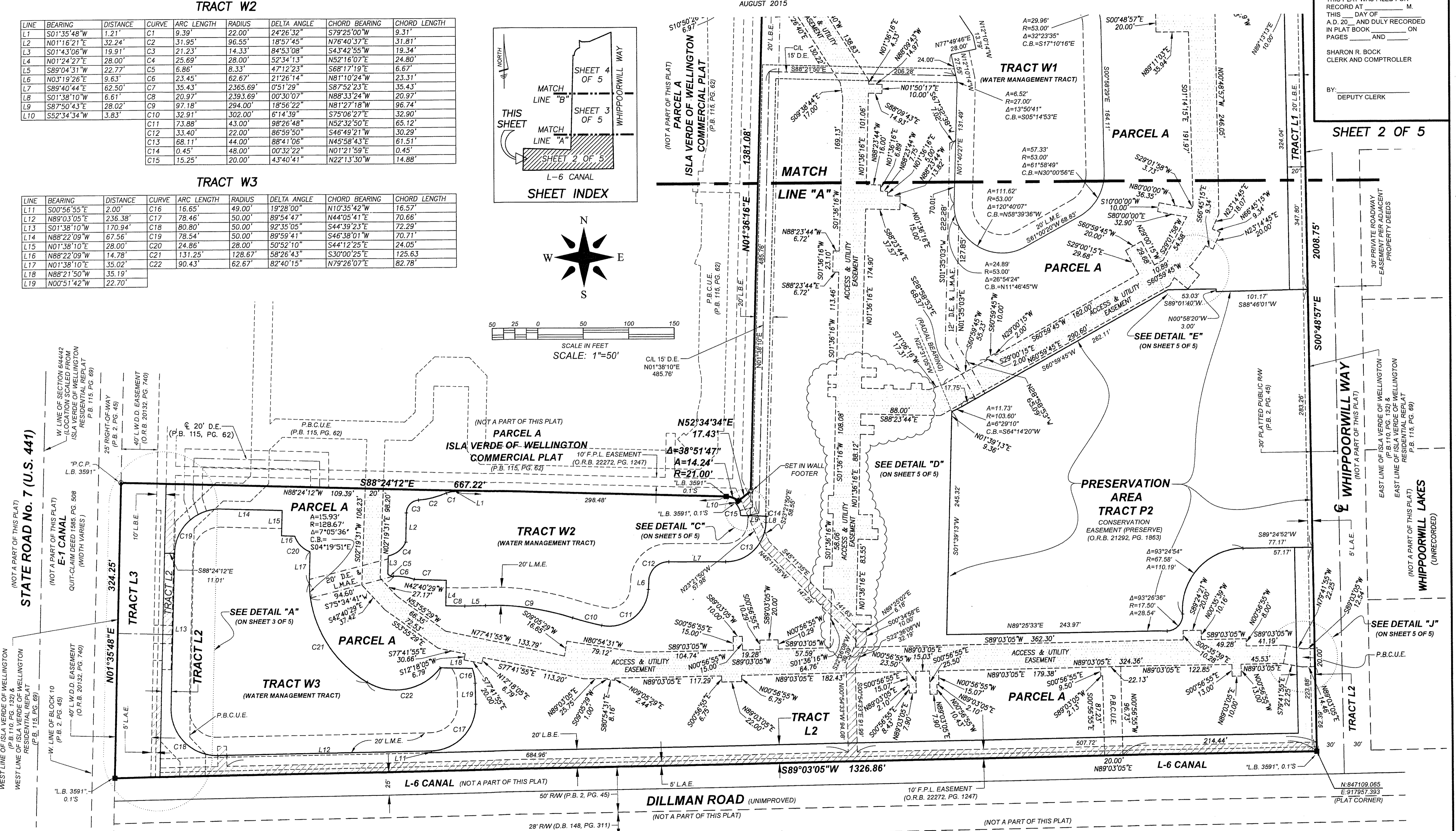
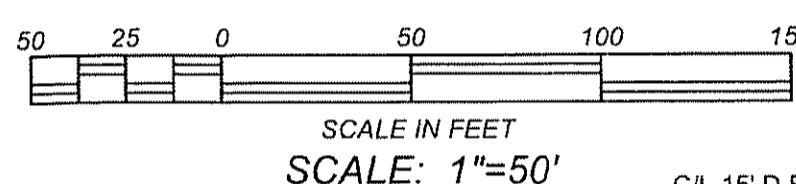
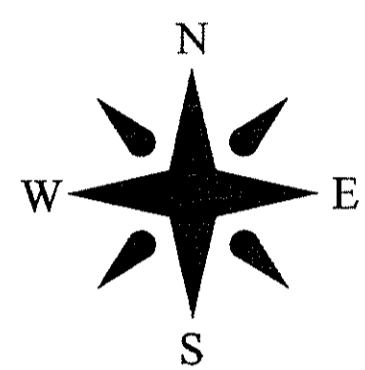
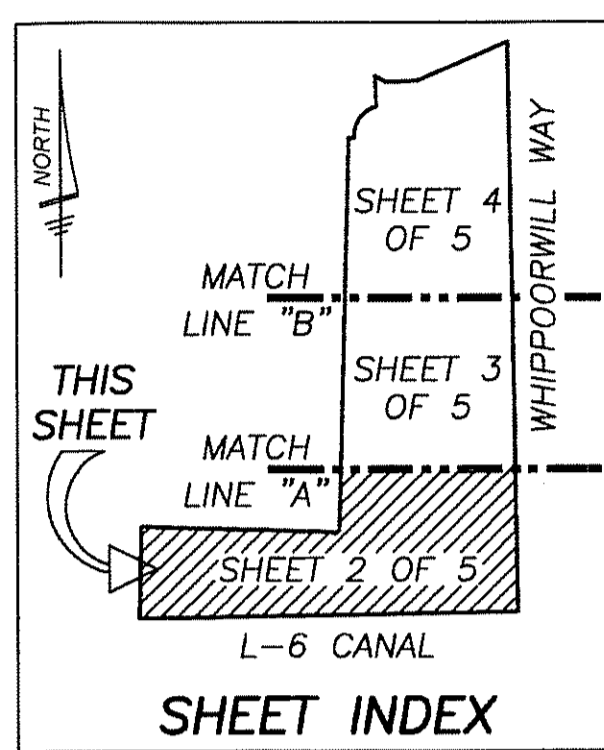
AUGUST 2015

TRACT W2

LINE	BEARING	DISTANCE	CURVE	ARC LENGTH	RADIUS	DELTA ANGLE	CHORD BEARING	CHORD LENGTH
L1	S01°35'48"W	1.21'	C1	9.39'	22.00'	24°26'32"	S79°25'00"W	9.31'
L2	N01°16'21"E	32.24'	C2	31.95'	96.55'	18°57'45"	N76°40'37"E	31.81'
L3	S01°43'06"W	19.91'	C3	21.23'	14.33'	84°53'08"	S43°42'55"W	19.34'
L4	N01°24'27"E	28.00'	C4	25.69'	28.00'	52°34'13"	N52°16'07"E	24.80'
L5	S89°04'31"W	22.77'	C5	6.86'	8.33'	47°12'23"	S68°17'19"E	6.67'
L6	N03°19'26"E	9.63'	C6	23.45'	62.67'	21°26'14"	N81°10'24"W	23.31'
L7	S89°04'44"E	62.50'	C7	35.43'	2365.69'	0°51'29"	S87°52'23"E	35.43'
L8	S01°38'10"W	6.61'	C8	20.97'	2393.69'	00°30'07"	N88°33'24"W	20.97'
L9	S87°50'43"E	28.02'	C9	97.18'	294.00'	18°56'22"	N81°27'18"W	96.74'
L10	S52°34'34"W	3.83'	C10	32.91'	302.00'	6°14'39"	S75°06'27"E	32.90'
			C11	73.88'	43.00'	98°26'48"	N52°32'50"E	65.12'
			C12	33.40'	22.00'	86°59'50"	S46°49'21"W	30.29'
			C13	68.11'	44.00'	88°41'06"	N45°58'43"E	61.51'
			C14	0.45'	48.00'	00°32'22"	N01°21'59"E	0.45'
			C15	15.25'	20.00'	43°40'41"	N22°13'30"W	14.88'

TRACT W3

LINE	BEARING	DISTANCE	CURVE	ARC LENGTH	RADIUS	DELTA ANGLE	CHORD BEARING	CHORD LENGTH
L11	S00°56'55"E	2.00'	C16	16.65'	49.00'	19°28'00"	N10°35'42"W	16.57'
L12	N89°03'05"E	236.38'	C17	78.46'	50.00'	89°54'47"	N44°05'41"E	70.66'
L13	S01°38'10"W	170.94'	C18	80.80'	50.00'	92°35'05"	S44°39'23"E	72.29'
L14	N88°22'09"W	67.56'	C19	78.54'	50.00'	89°59'41"	S46°38'01"W	70.71'
L15	N01°38'10"E	28.00'	C20	24.86'	28.00'	50°52'10"	S44°12'25"E	24.05'
L16	N88°22'09"W	14.78'	C21	131.25'	128.67'	58°26'43"	S30°00'25"E	125.63'
L17	N01°38'10"E	35.02'	C22	90.43'	62.67'	82°40'15"	N79°26'07"E	82.78'
L18	N88°21'50"W	35.19'						
L19	N00°51'42"W	22.70'						



ABBREVIATIONS/LEGEND

- = 4"x4" CONCRETE MONUMENT FOUND (AS NOTED)
- = 4"x4" CONCRETE MONUMENT WITH DISK STAMPED "P.R.M. LB #4569"
- = SET 5/8" IRON ROD & CAP STAMPED "WALLACE LB #4569"
- = FOUND IRON ROD AND CAP (AS NOTED)
- = SET MAG NAIL & DISK STAMPED "P.R.M. LB #4569"
- = NAIL & DISK FOUND (AS NOTED)
- C/L = CENTERLINE
- P.B.C. = PALM BEACH COUNTY
- P.C.P. = PERMANENT CONTROL POINT
- P.R.M. = PERMANENT REFERENCE MONUMENT
- N = NORTHING
- E = EASTING
- D.B. = DEED BOOK
- L.A.E. = LIMITED ACCESS EASEMENT
- L.M.E. = LAKE MAINTENANCE EASEMENT
- L.M.A.E. = LAKE MAINTENANCE ACCESS EASEMENT
- L.B. = LICENSED BUSINESS
- L.B.E. = LANDSCAPE BUFFER EASEMENT
- O.R.B. = OFFICIAL RECORDS BOOK
- P.A.E. = PEDESTRIAN ACCESS EASEMENT
- P.B. = PLAT BOOK
- P.G. = PAGE
- R.P.B. = ROAD PLAT BOOK
- R/W = RIGHT-OF-WAY
- D.E. = DRAINAGE EASEMENT
- U.E. = UTILITY EASEMENT
- W.C. = WITNESS CORNER
- A = ARC
- R = RADIUS
- Δ = CENTRAL ANGLE
- C.B. = CHORD BEARING
- P.B.C.U.E. = PALM BEACH COUNTY UTILITY EASEMENT
- O/A = OVERALL

STATE OF FLORIDA
 COUNTY OF PALM BEACH
 THIS PLAT WAS FILED FOR
 RECORD AT _____ M.
 THIS _____ DAY OF _____
 A.D. 20____ AND DULY RECORDED
 IN PLAT BOOK _____ ON
 PAGES _____ AND _____
 SHARON R. BOCK
 CLERK AND COMPTROLLER
 BY: _____
 DEPUTY CLERK

SHEET 2 OF 5

WALLACE SURVYNG
 CORP., LICENSED SURVEYOR #1989
 5551 VILLAGE BOULEVARD, WEST PALM BEACH, FLORIDA 33407 • (561) 940-4551

FIELD: _____	JOB NO: 13-1322-11	F.B. WP106	PG. 191
OFFICE: N.I.	DATE: 10/20/2014	DWG. NO. 13-1322-11	
CK'D: C.W.	REF: 13-1322.DWG	SHEET 2 OF 5	